

TUBICUS®

Double-walled storage containers in accordance with DIN 6624-2

The MLB-internal, horizontal, cylindrical, storage containers in double-walled, painted, construction design with leakage-monitoring according to the liquid or vacuum principle and according to the specification/di-

rective of WHG, BetrSichV, TRBS and TRGS, for installation in a building or in the open air, for diesel, heating oil, gasoline and products corr. to the material list DIN 6601

COMPACT

SECURE

ROBUST

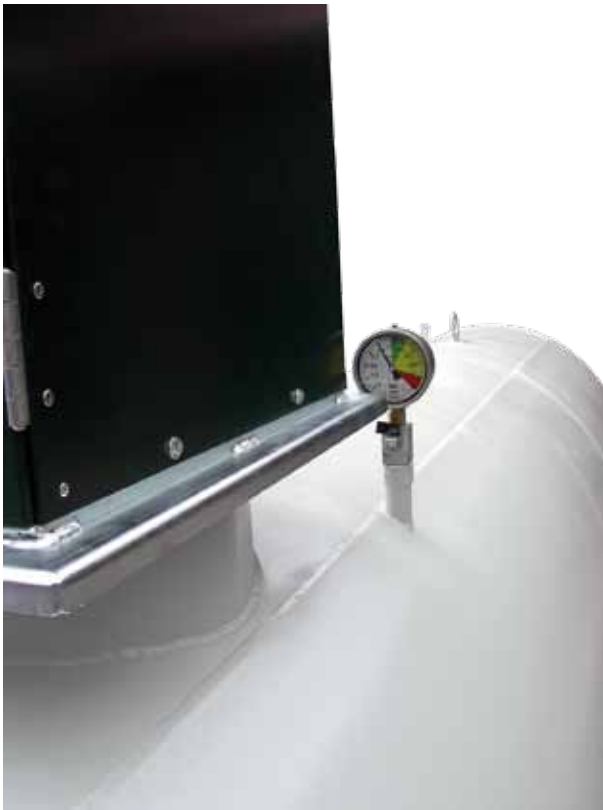


Container basic equipment:

- Filling line with TW connection 2–2½", lockable
- Suction and venting line
- Limit indicator switch
- Optical level indicator
- Leakage indicating instrument on liquid or vacuum base
- Dome cover with integrated collection trough
- 2x crane lifting lugs
- Painted implementation

Optional additional equipment:

- Pumps with different supply capacities
- Metering mechanism
- Cabinet for the protection of the equipment
- Filling pump with and without tank data recording
- Drive-under construction for company-internal transport
- Further accessories on request


Technical data

Type TUBICUS®	LB 1000	LB 1500	LB 2000	LB 3000	LB 2000	LB 3000	LB 3500	LB 5000
Volume approx. litre	1000	1500	2000	3000	2000	3000	3500	5000
Diameter approx. mm	1000	1000	1000	1000	1250	1250	1250	1250
Length approx. mm	1460	2110	2750	4050	2110	2920	3150	4360
Height* approx. mm	1400	1400	1400	1440	1700	1700	1700	1700
Dead weight** kg approx.	370	395	490	615	550	655	750	910

*Without cabinet

**Without equipment

Rights to technical errors or changes reserved